



HOUSER
— RACING —

Part Number 070704-R2

Houser Racing Polaris RZR XP 1000 / Turbo / 4-Seater / RS1 Rear Lower Radius Rods

Included Parts

- (2) Radius Rods
- (4) Pre-installed spherical rod ends
- (1) Upper Spacer Bracket
- (1) Lower Spacer Bracket
- (4) M12 x 1.75 x 80 Flange Bolt
- (4) M12 x 1.75 Nylon Lock Nut



Warning: *If you have a 2016 and older unit, using a 12mm drill bit you will need to drill out the lower radius rod mounts at the frame, lower mounts on the radius rod plate, and the lower mount on the spindles in order to use these radius rods.*

Additional hardware needed for 2016 and older models:

For upper radius rod hole at frame (Can be purchased from hardware store):

(2) M10 x 1.75 x 80 Flange Bolt

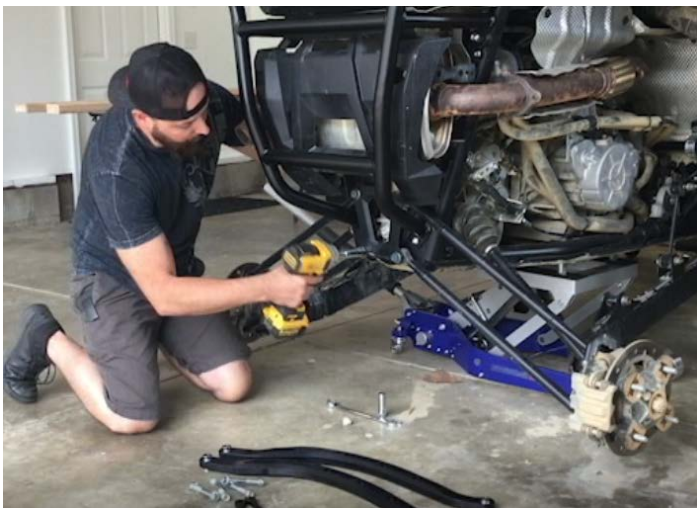
(2) M10 x 1.75 Nyloc Nut

For the lower radius rod mount at the spindle (Must be purchased from Polaris):

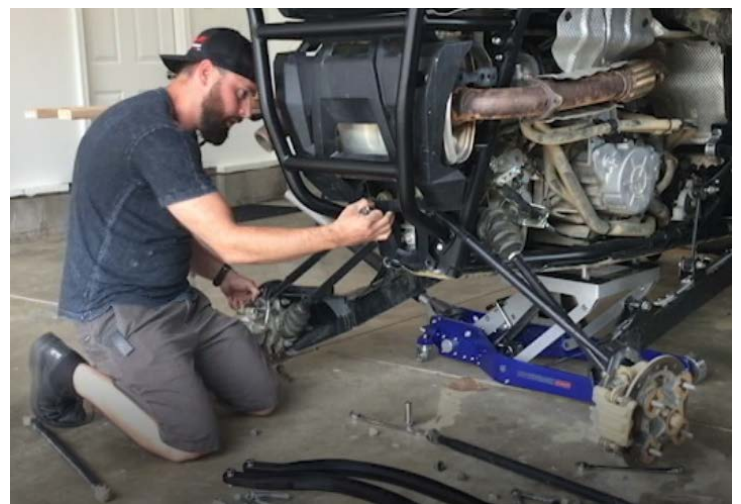
(2) Part Number: 7520479 (M12 x 1.5 x105)

(2) Part Number: 7556287 (Washer)

(2) Part Number: 7547334 (M12 x 1.5 Flange Nut)



Remove the OEM rear lower radius rods by removing the existing bolts at the frame and spindles using an impact with an 18mm socket and an 18mm wrench.



Remove the upper radius rod only at the frame, leave the upper radius rod attached to the spindle. Next you will remove the plate.



Take the straight spacer bracket and place it in between the frame and upper radius rods and the mounting point.



Reattach the plate using two of the provided flange bolts and nylon lock nuts at the upper two mounts, securing the upper radius rods with the bracket. *(For 2016 and older models, use the M10 x 1.75 x 80)*



Insert the "U" shaped spacer bracket in between the frame and the plate. The flat part should be facing down, making it appear as a "U" if installed



Position the radius rod in between the plate and the spacer, and slide the provided flange bolt into place. Secure it with the provided nyloc nut. Repeat on the other side.



Attach the other side of the radius rod to the spindle. Insert the same bolt that you took out in the same direction as you removed it, slide it in in the direction of the front of the vehicle. The washer and nut will go towards the back of the vehicle. Repeat on the other side. Torque all bolts to 79 ft lbs. *(For 2016 and older models, use the additional OEM hardware purchased from Polaris instead)*